



MBT-1 Basic Configuration (62' w/ 1 Wall Section)

- Modular platforms, caboose (movable rear axle assembly) & wall sections
- Configurable from 42-102' w/ 0-3 wall sections
 - Use one or more individually or together
 - Reconfigurable to the right or the left (tractor & caboose attach at either end)
- Tested/FHWA Accepted under NCHRP 350 & MASH for TL-2 and TL-3 use on the National Highway System

Common Options

- Additional wall sections (20' ea/0-3 can be used)
 - Onboard power (120/240 generator, 12/24V battery packs & solar)
 - Work lighting
 - Signage
 - TMA (TL-2 or TL-3)
- Rear steer (w/ adjustable clearance)
 - Other (made to order)

Military, Security & Defense Options

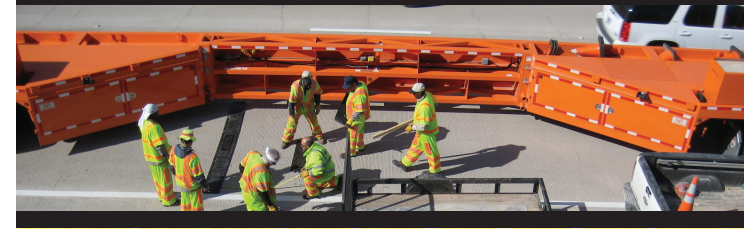
For additional pictures, video and other information, including crash test video and NCHRP 350/MASH Acceptance, see www.mobilebarriers.com

Mobile Barriers LLC

24918 Genesee Trail Road • Golden, Colorado 80401
phone 303-526-5995 • fax 303-526-9959
email info@mobilebarriers.com



Mobile Barriers, LLC.
24918 Genesee Trail Road
Golden, Colorado 80401



Mobile Barriers MBT-1®
Improving Safety, Efficiency & Traffic Flows
In & Around Work Zones



www.mobilebarriers.com

www.mobilebarriers.com

MOBILE BARRIERS

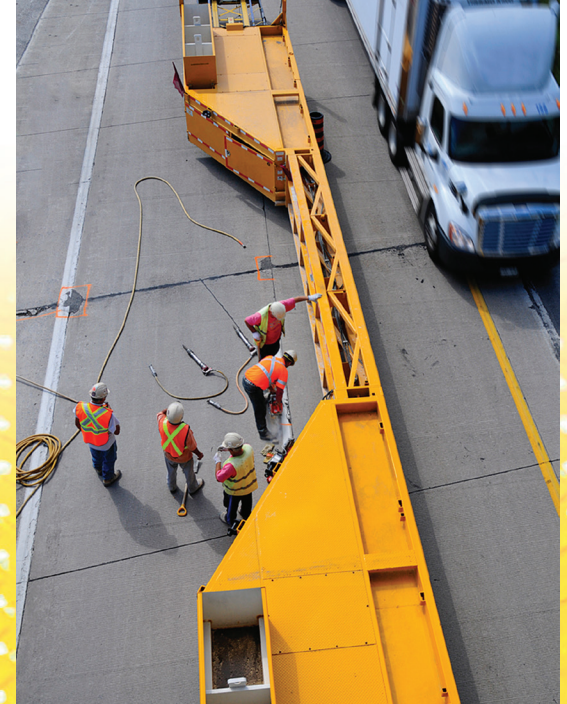
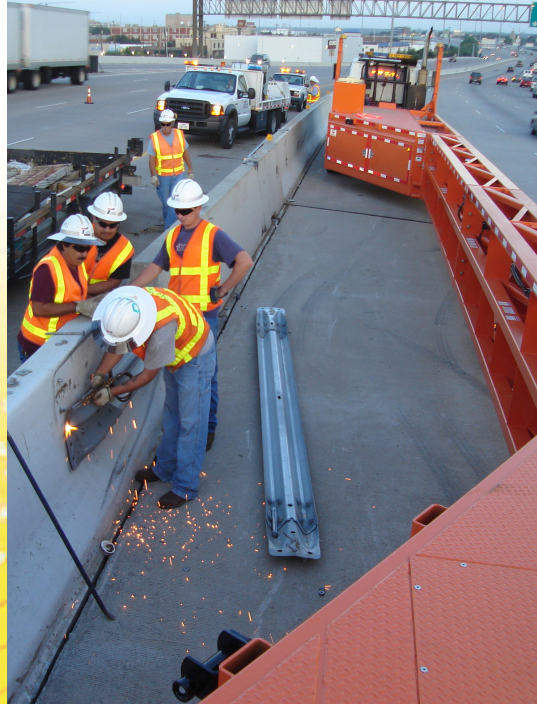
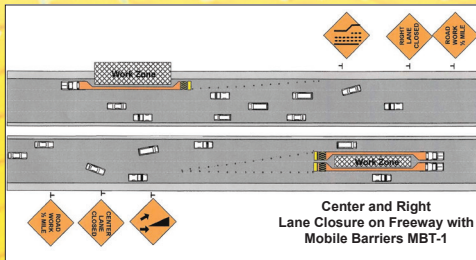


Mobile Barriers MBT-1®

Improving Safety, Efficiency & Traffic Flows
In & Around Work Zones

- 42'-102' of highly mobile protection.
- Interchangeable right/left configurations.
- Modular, efficient and self-contained.
- Onboard power, lighting, storage & other features.
- NCHRP 350 & MASH.

Military, Security & Defense Options Available



www.mobilebarriers.com

www.mobilebarriers.com

